



WOLF TRAP

FOUNDATION FOR THE PERFORMING ARTS

**WOLF
TRAP**

INSTITUTE FOR
EARLY LEARNING
THROUGH THE ARTS

Arts Across the Curriculum

with Wolf Trap Master Teaching Artists



Valerie Branch



Kofi Dennis



Penny Russell

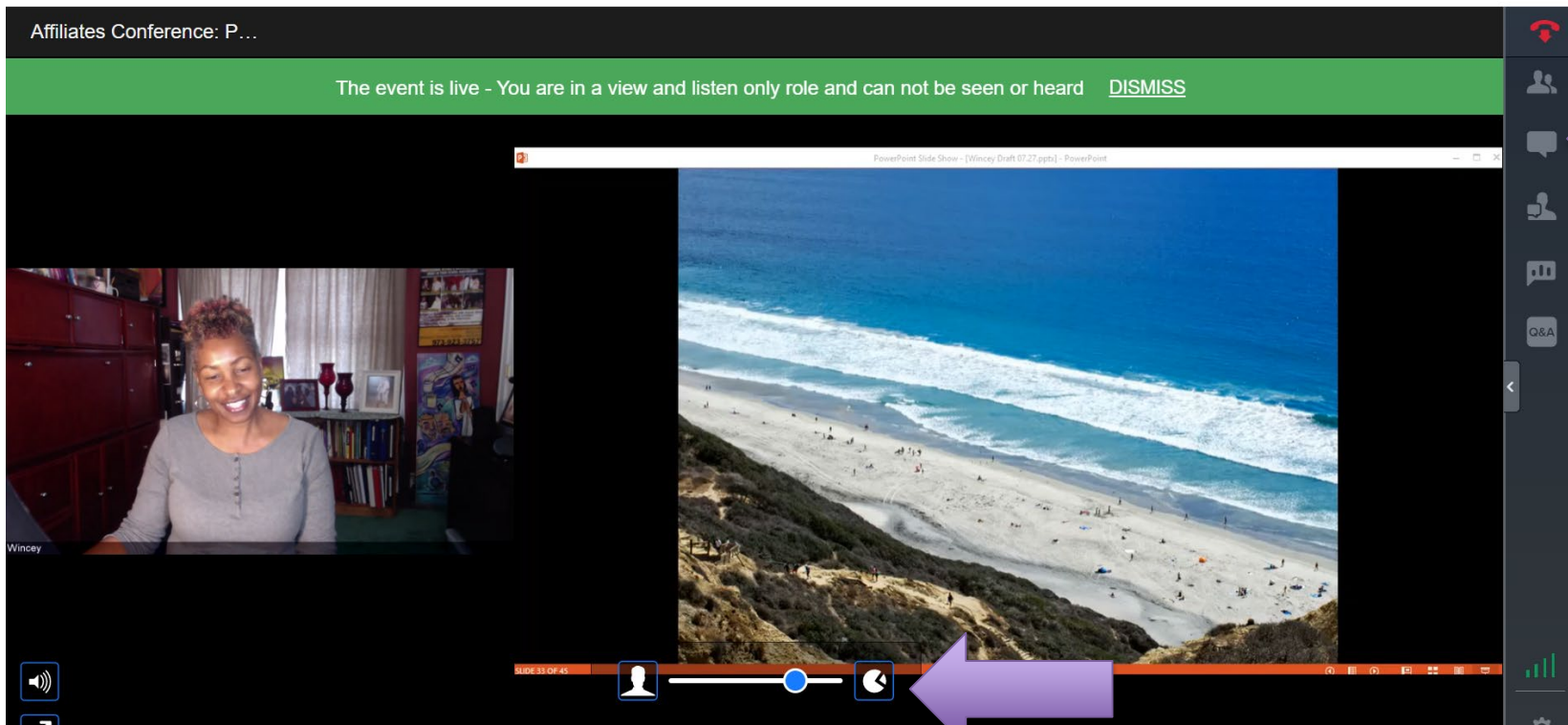
Made possible by the generous support of Suzanne and Glenn Youngkin



Tips for Using BlueJeans



Submit comments/questions to “Everyone” via the chat button.



Click this icon to access the chat feature

Use the toggle to adjust the size of the presenter/slides



WOLF TRAP

FOUNDATION FOR THE PERFORMING ARTS

Penny Russell

Wolf Trap Master Teaching Artist

Puppetry





Classroom Character



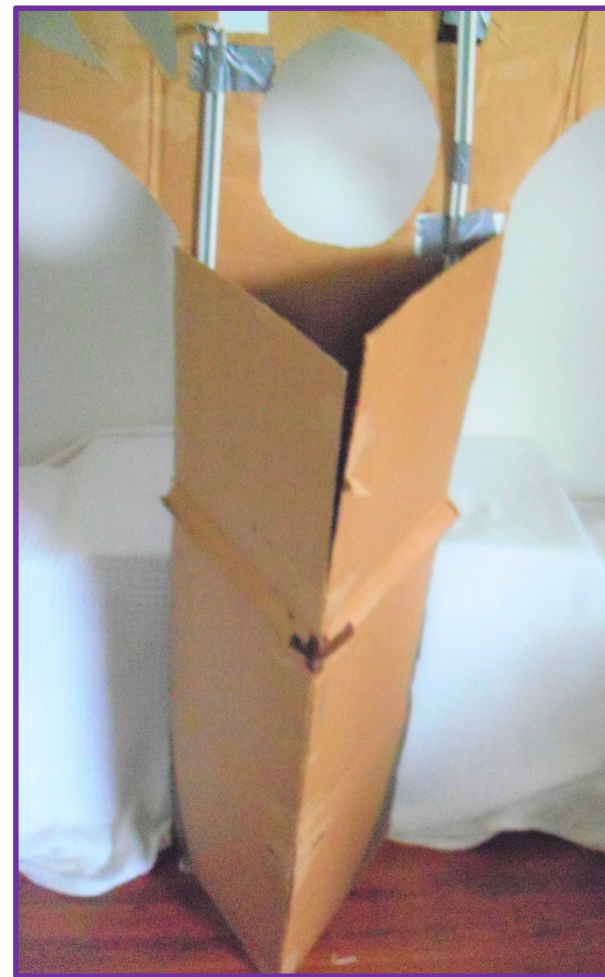
- Create “Outdoor Ambassador”
- Reinforce expectations/social skills
- Review content
- Develop empathy
- Support transitions



WOLF TRAP

FOUNDATION FOR THE PERFORMING ARTS

Designing a Tree Prop





Using the Tree Prop to Support Learning

- Visual connection to the outdoors
- Puppet stage
- Tree identification
- Seasons
- Habitat



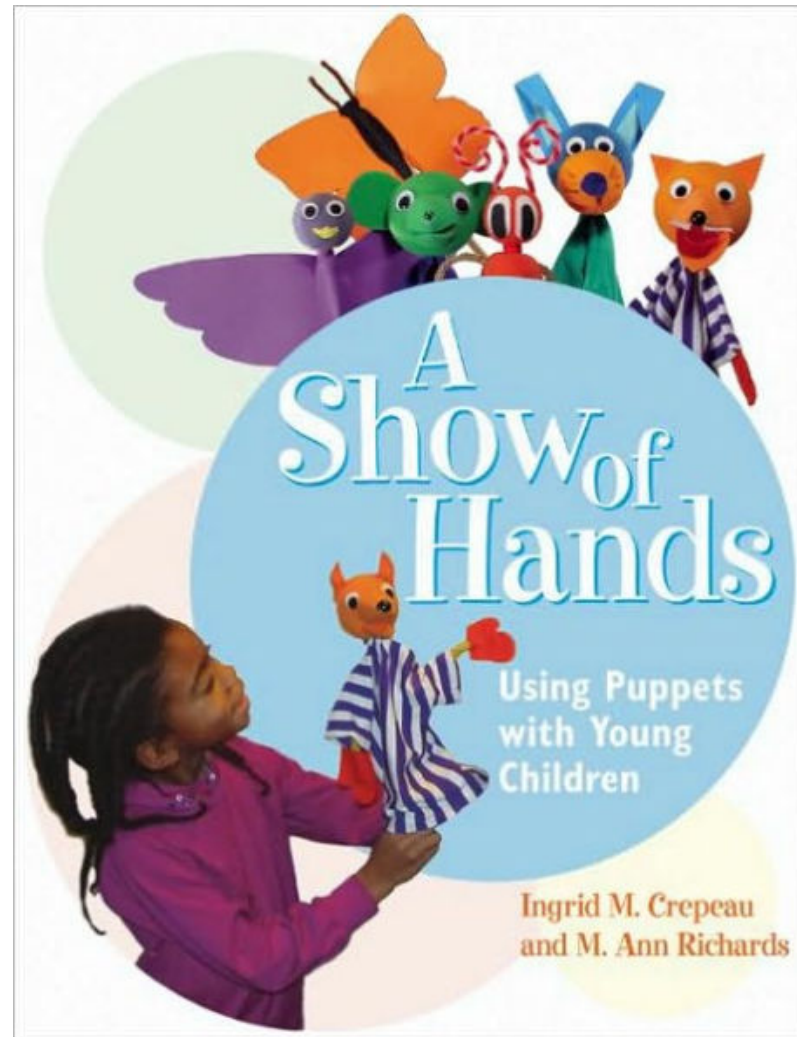
Creating and Using Puppets (Rod, Finger, Object) to Support:

- Language Development—especially for English Language Learners and Visual Thinkers
- Visual Tracking—figure/ground perception
- Gross Motor Movement



WOLF TRAP

FOUNDATION FOR THE PERFORMING ARTS



Crepeau, Ingrid M. and M. Ann Richards. *A Show of Hands: Using Puppets with Young Children*. Redleaf Press, 2003.



WOLF TRAP

FOUNDATION FOR THE PERFORMING ARTS

Valerie Branch

*Wolf Trap Master Teaching Artist
Dance*





Pass the Dance

- Self-expression
- Collaboration
- Turn-taking
- Responsible decision-making



NON-LOCOMOTOR MOVEMENTS

TWIST	WIGGLE
SHAKE	BEND
CIRCLE	TURN
STRETCH	MELT
RISE	FALL
CURVE	CARVE
PUSH	PULL
KICK	SWAY



WOLF TRAP

FOUNDATION FOR THE PERFORMING ARTS

Step One: Begin with one non-locomotor movement



NON-LOCOMOTOR MOVEMENTS

TWIST	WIGGLE
SHAKE	BEND
CIRCLE	TURN
STRETCH	MELT
RISE	FALL
CURVE	CARVE
PUSH	PULL
KICK	SWAY



WOLF TRAP

FOUNDATION FOR THE PERFORMING ARTS

Step Two: Add additional non-locomotor movements



NON-LOCOMOTOR MOVEMENTS

TWIST	WIGGLE
SHAKE	BEND
CIRCLE	TURN
STRETCH	MELT
RISE	FALL
CURVE	CARVE
PUSH	PULL
KICK	SWAY



WOLF TRAP

FOUNDATION FOR THE PERFORMING ARTS

Step Three: Get creative!



NON-LOCOMOTOR MOVEMENTS

TWIST	WIGGLE
SHAKE	BEND
CIRCLE	TURN
STRETCH	MELT
RISE	FALL
CURVE	CARVE
PUSH	PULL
KICK	SWAY



Pass the Dance Tips!

- “Pass” the dance to the person next to you using a cue like “ready and pass”
- Describe the children’s movements with detail



Choreography

- Explore high, middle, low levels
- Create frozen poses
- Opportunities for self-expression



WOLF TRAP

FOUNDATION FOR THE PERFORMING ARTS

Kofi Dennis

*Wolf Trap Master Teaching Artist
Music/Drama*





Actor's Tools Song, Kofi Dennis

Do you know what actors do?

When they use their actors tools?

*Actors, Actors, Use their **VOICE!***

*Actors, Actors, Use their **BODY!***

*Actors use their **IMAGINATION!***

To share their stories all around!



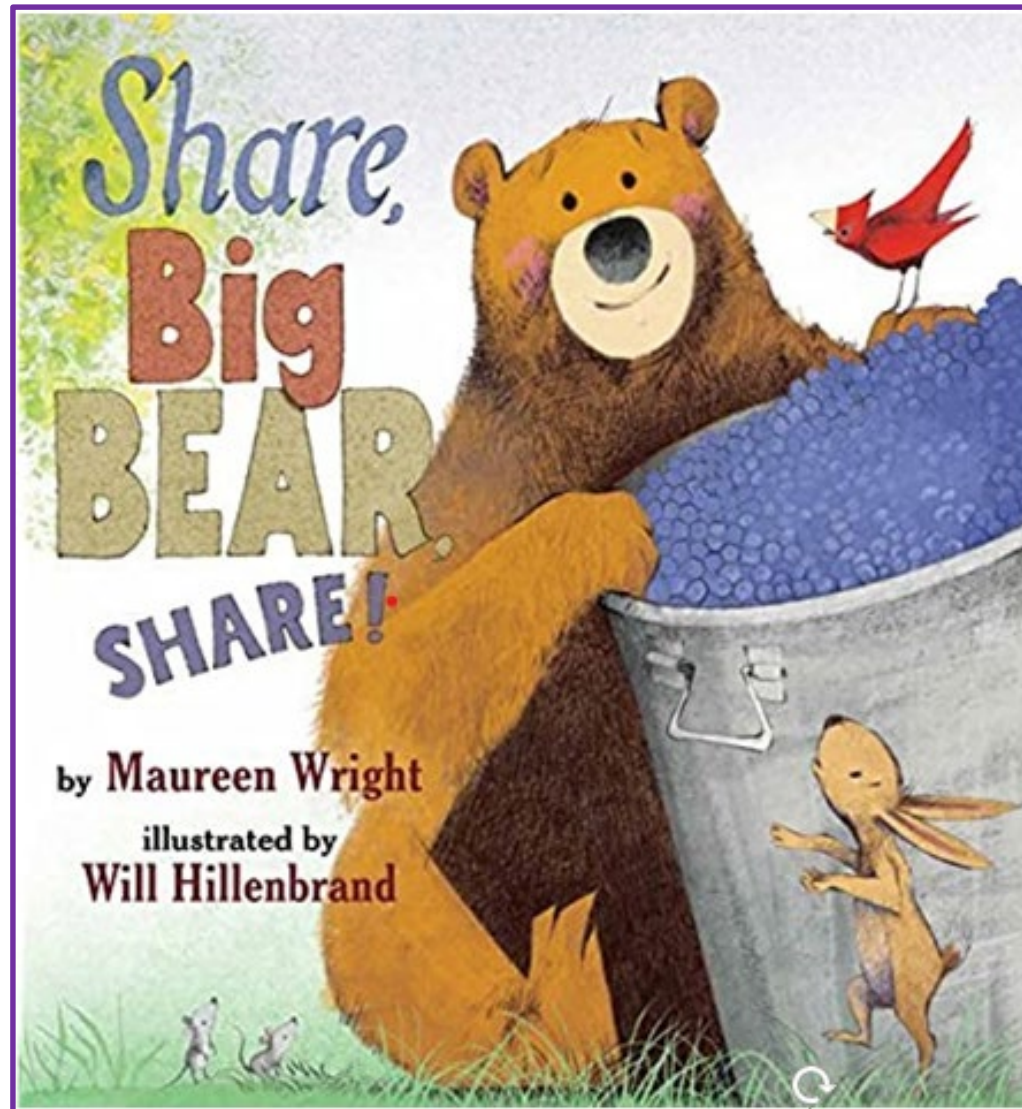
Elements of Drama

- **Plot**
 - Narrator/storyteller
- **Setting**
 - Environment
- **Character**
 - Body, voice, imagination, emotion
- **Props/Costumes**



WOLF TRAP

FOUNDATION FOR THE PERFORMING ARTS



Wright, Maureen, and Will Hillenbrand. *Share, Big Bear Share!* Two Lions, 2017.



WOLF TRAP

FOUNDATION FOR THE PERFORMING ARTS



Wright, Maureen, and Will Hillenbrand. *Share, Big Bear Share! Two Lions*, 2017.



Elements of Drama

- **Plot**
 - Narrator/storyteller
- **Setting**
 - Environment
- **Character**
 - Body, voice, imagination, emotion
- **Props/Costumes**



WOLF TRAP

FOUNDATION FOR THE PERFORMING ARTS

Q & A





WOLF TRAP

FOUNDATION FOR THE PERFORMING ARTS

STAY CONNECTED WITH WOLF TRAP EDUCATION



Check in with us on
Twitter **@WolfTrap_Edu**



Visit our Education website
education.wolftrap.org